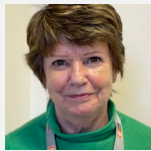


Wellbeing: Counselling

Supporting you through counselling



ROYAL
HOLLOWAY
UNIVERSITY
OF LONDON



Pat Simpson
Head of Counselling



Dee Raja
Supervising Counsellor



Sal Miah
Counselling Caseworker



Anna Disley
Counselling Caseworker



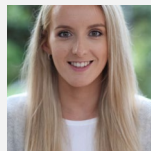
Karen Macmillan
Counselling Caseworker



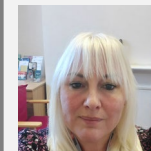
Victoria Turton-Blyth
Counselling Caseworker



Kenny Aruwa
Counselling Caseworker



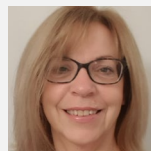
Jennifer Chivers
Counselling Caseworker



Letitia Green
Counselling Caseworker



Faiza Akram
Counselling Co-ordinator



Helen Beaumont
Community Co-ordinator